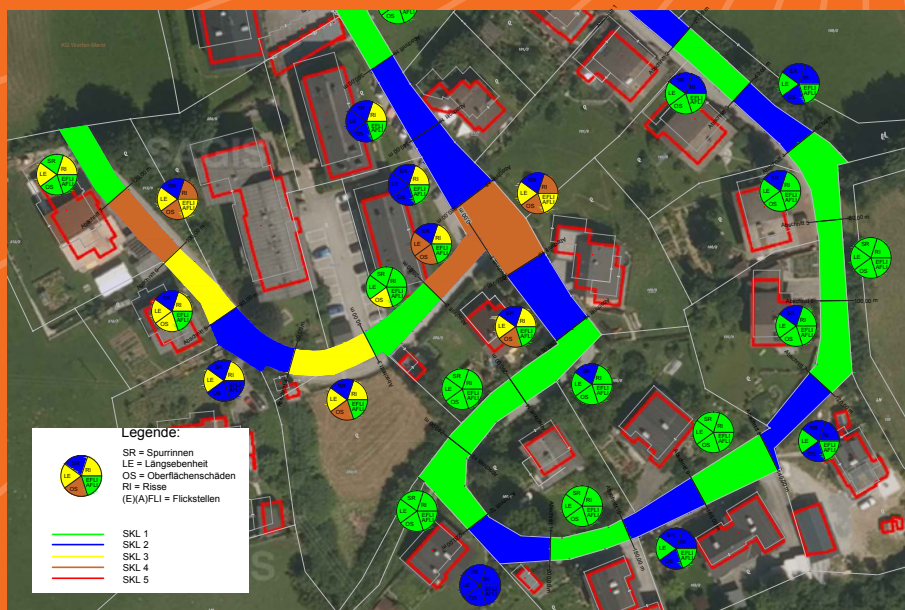
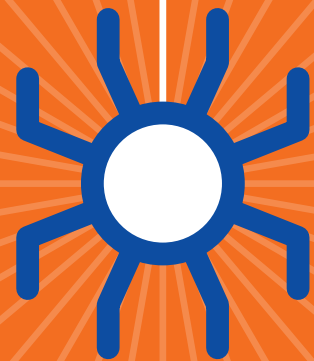


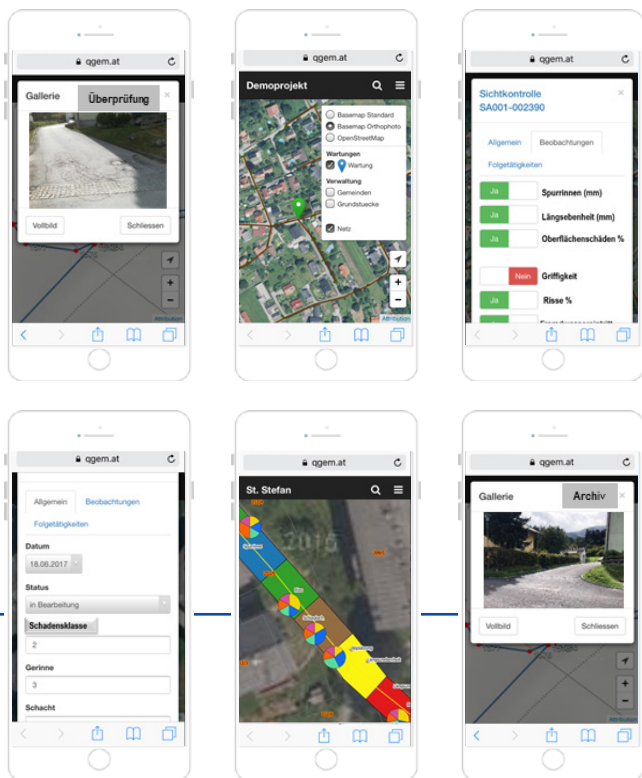
gemspider

www.gemspider.at

EASILY assess your roads



Tailor-made for every user



You are on the front line - the man on site

You want to know:

How do you get orientation and overview quickly?

How can you do your work and recordings as easily as possible?

How can you easily adjust and change data?

„Mit den Gemtools
habe ich in wenigen
Arbeitsschritten einen
fertigen Prozess“



Municipal open source GIS solutions

Road

To plan an efficient use of costs for future road renovation **Gemspider Pavement Management** has a **complete solution concept** with the comparison of necessary renovation measures for all underground installations.

With its clear software tools, **Gemspider** offers a **visual street evaluation with condition assessment** of the traffic areas up to the redevelopment concept. Gemspider has simple tools for documenting, servicing and maintaining the networks.

Gemspider helps you with **simple, efficient tools** and **work processes** according to the RVS 13.01.10, in order to record and manage the multitude of data in your system. Accompanied by experts, the Spider team will help you manage and record the data **until you can do it alone.**



You coordinate the work - leading the office

It is particularly important for you:

How do you get the status and information about the overall project quickly?

How can you coordinate the required work as efficiently as possible with your colleagues and external companies and safely meet all legal requirements?

How can you create project evaluations that are simple, clear and understandable even for non-specialists?

You decide - and you are also responsible

You want to make good decisions based on facts:

How do you get a quick overview of costs and a status of the budget funds already used?

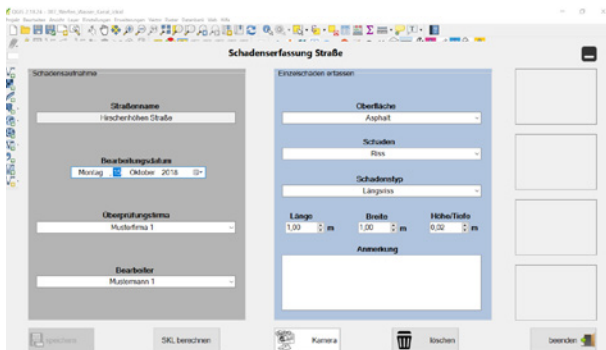
How do you see who has carried out or performed which work in your association / municipality?

How can you check the efficiency of the work and, if necessary, influence the processes?

„From the simple Gemspider user interface I get a precise status query“



„In the QGIS level I have with Gemspider immediately an overview about the current costs“



Condition detection

Gemspider Road allows you to easily record your road conditions. With a table PC or mobile phone, the recording and condition assessment is carried out on site or after **stereo image measurement** on the PC in the office.

Gemspider offers a simple and **clear user interface**.

Analyzes

After the damage assessment and the damage classification the Gemspider analysis tools offer simple, uncomplicated evaluations thanks to the **automatic damage generation**.

Graphics, plans and cost considerations with regard to the **overall condition (street, sewer, water, district heating, gas, lighting, etc.)** are created in no time and give an overview of the need of renovation at the push of a button.

Knowledge of the current road condition by **Gemspider** is essential for **efficient renovation planning of your roads** in the Gemspider Pavement system.

gemspider



www.whitestone.at

The Gemspider tools offer you

- easy access to your data
- precise overview of the existence and condition of your infrastructure
- Overview of the measures and activities to be carried out and still to be carried out
- Easier work through customized and optimized processes

What is behind it?

Gemspider is an infrastructure software that uses Gemtools based on the open source products QGIS and OpenStreetmap (Gemtools mobile app) and provides extremely fast access to your line data in the Gemspider database.

- QGIS is a user-friendly open source geographic information system (GIS)
- OpenStreetMap www.openstreetmap.org

spider-sol GmbH

5451 Tenneck, Neue Heimat 16
Austria

Contact

Christian Schilchegger
+43 660 354 69 69
christian.schilchegger@gemspider.at

Peter Laubichler
+43 664 568 66 14
peter.laubichler@gemspider.at

www.gemspider.at



QGIS user group Austria -
Association for the Promotion of Free Software for geographic information systems